

PRODUCT DATA SHEET

Product Name: ANTI-AMYLOID PRECURSOR PROTEIN ANTIBODY

Product Code: P40000-100

Pack Size: 100 µL

Description: A large body of evidence has implicated the amyloid precursor protein (APP) in the pathogenesis of Alzheimer's disease (AD) (Kamenetz et al., 2003). The phosphorylation of APP at Thr⁶⁶⁸ is thought to play a critical role in generation of the soluble APP (*beta*) and *beta*-amyloid peptide (*abeta*) which are the major components of senile plaques in patient brains inflicted with AD (Liu et al., 2003; Ando et al., 2001).

Physical State: Liquid; Buffer contents: 10 mM HEPES (pH 7.5), 150 mM NaCl, 100 µg per mL BSA and 50% glycerol

Storage/Stability: Stable at -20 °C for at least 1 year. For long term storage -20 °C is recommended

Purification Method: Prepared from rabbit serum by affinity purification on a column made with the C-terminal peptide used as antigen.

Shipping Conditions: Domestic: Blue Ice
International: Blue Ice or Dry Ice

Host Species: Rabbit (Polyclonal)

Mr (kDa): 115

Immunogen: Peptide corresponding to amino acid residues from the C-terminal region of rat APP. Immunolabeling of the APP protein band is completely blocked by preadsorption of the antibody with the peptide used as antigen.

Species Reactivity: The antibody has been directly tested for reactivity in rat tissue. It is anticipated that the antibody will also work with canine, chicken, human, mouse and non-human primate tissues based on the fact that these species have 100% homology with the amino acid sequence used as antigen.

Recommended Antibody Dilutions:

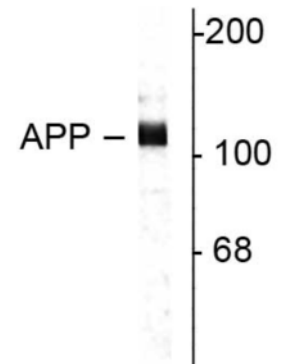
WB: 1:1000

References:

- 1) Ando K et al. (2001) *J Biol Chem* 276:40353-40361.
- 2) Kamenetz F et al. (2003) *Neuron* 37:925-937.
- 3) Liu F et al. (2003) *FEBS Lett* 547:193-196.

Western Blot

Rat hippocampal lysate showing specific immunolabeling of the ~115k APP protein.



Application Key: WB – Western Blot IF – Immunofluorescence IHC – Immunohistochemistry IP - Immunoprecipitation