

PRODUCT DATA SHEET

Product Name: ANTI-NMDA RECEPTOR, NR2A SUBUNIT ANTIBODY

Product Code: P43201-10

Pack Size: 10 µg

Description: The ion channels activated by glutamate are typically divided into two classes. Glutamate receptors that are activated by kainate and α -amino-3-hydroxy-5-methyl-4-isoxalone propionic acid (AMPA) are known as kainate/AMPA receptors (K/AMPA). Those that are sensitive to N-methyl-D-aspartate (NMDA) are designated NMDA receptors (NMDAR). The NMDAR plays an essential role in memory, neuronal development and it has also been implicated in several disorders of the central nervous system including Alzheimer's, epilepsy and ischemic neuronal cell death (Grosshans et al., 2002; Wenthold et al., 2003; Carroll and Zukin, 2002). The NMDA receptor is also one of the principal molecular targets for alcohol in the CNS (Lovinger et al., 1989; Alvestad et al., 2003; Snell et al., 1996). The NMDAR is also potentiated by protein phosphorylation (Lu et al., 1999). The rat NMDAR1 (NR1) was the first subunit of the NMDAR to be cloned. The NR1 protein can form NMDA activated channels when expressed in *Xenopus* oocytes but the currents in such channels are much smaller than those seen in situ. Channels with more physiological characteristics are produced when the NR1 subunit is combined with one or more of the NMDAR2 (NR2 A-D) subunits.

Physical State: Lyophilized from 5 mM ammonium bicarbonate. The antibody should be reconstituted in 50 µl phosphate buffered saline (PBS: 137 mM NaCl, 7.5 mM Na₂HPO₄, 2.7 mM KCl, 1.5 mM KH₂PO₄, pH 7.4) before use. After reconstitution the antibody should be aliquoted and stored at -20°C.

Storage/Stability: Stable at -20 °C for at least 1 year. For long term storage -20 °C is recommended

Purification Method: Prepared from rabbit serum by affinity purification using a column to which the fusion protein immunogen was coupled.

Shipping Conditions: Domestic: Blue Ice
 International: Blue Ice or Dry Ice

Host Species: Rabbit (Polyclonal)

Mr (kDa): 180

Immunogen: Fusion protein from the C-terminus of the NR2A subunit of rat NMDA receptor.

Species Reactivity: Recognizes human, mouse and rat forms of the NR2A subunit of NMDAR. No reactivity towards the NR2B and NR2C subunits. Immunolabeling is blocked by pre-adsorption of antibody with the fusion protein used to generate the antibody.

Recommended Antibody Dilutions:

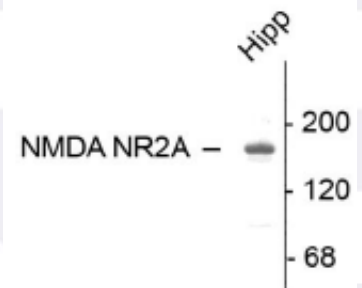
WB: 1:1000
IHC: 1:1000 to 1:2000
IP: 3 µL per 200 µg lysate

References:

- 1) Carroll RC et al. (2002) *Trends Neurosci* 25:571-577.
- 2) Lovinger DM et al. (1989) *Science* 243:1721-1724.
- 3) Lu W-Y et al. (1999) *Nature Neurosci* 2:331-338.

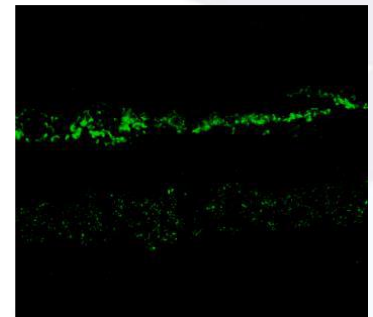
Western Blot

10 ug of rat hippocampal (Hipp) lysate showing specific immunolabeling of the ~180k NR2A subunit of the NMDA receptor.



Immunostaining

Rabbit retina showing NR2A in the rod and cone photoreceptors in the outer plexiform layer as well as the entire inner plexiform layer.



Application Key: WB – Western Blot IF – Immunofluorescence IHC – Immunohistochemistry IP - Immunoprecipitation

FOR RESEARCH USE ONLY. NOT FOR USE IN DIAGNOSTIC PROCEDURES.

P/N: 74071 Rev 02